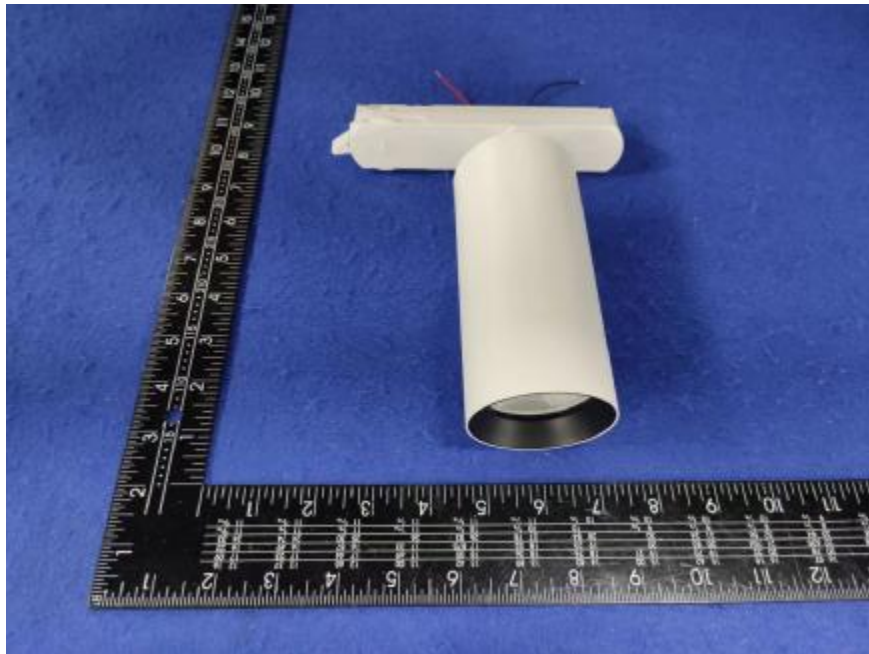


Luminaire Photograph



Light Output Ratio:	91.6%	
Luminaire Power:	15.91 W	
SHR Nominal:	0.50	Calculated using the TM5
SHR Maximum:	0.65	fine grid method.

C Range: 0 - 360DEG
C Interval: 30.0DEG
Test Speed: HIGH
Temperature: 25.3 °C
Operators: zoe
Test Date: 2024-4-7

γ Range: 0 - 180DEG
 γ Interval: 1.0DEG
Test System: EVERFINE GO-SPEX500_V1 SYSTEM V2.00.461
Humidity: 65.0%
Test Distance: 3.160m [K=1.0000]
Remarks: LAMP: BXRE-40G10TH-A-83 Ra: 90
LENS: PM-0132B 36R
DRIVER: SC42W300-1050CG-4W 400mA
30minutes warm-up

LUMINOUS INTENSITY DISTRIBUTION DIAGRAM

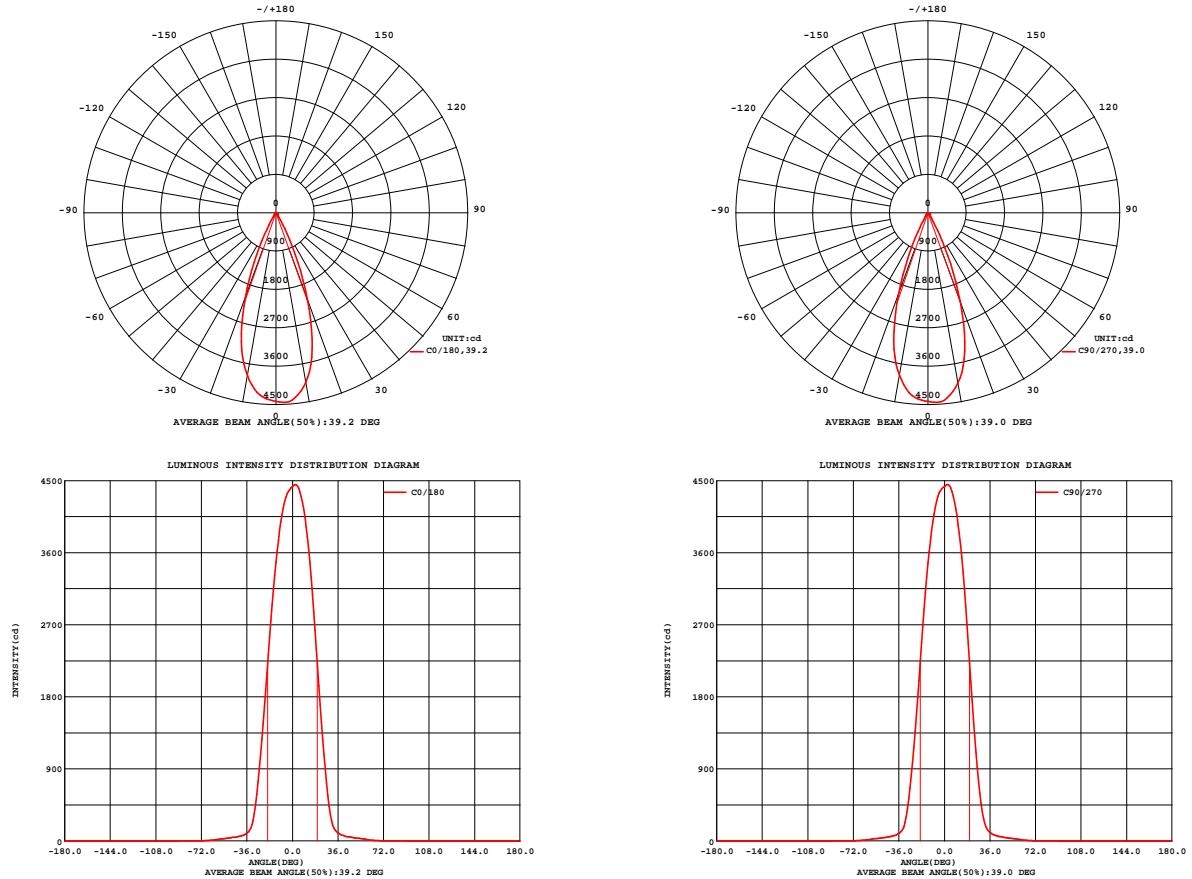


Fig. C0/C180

Fig. C90/C270

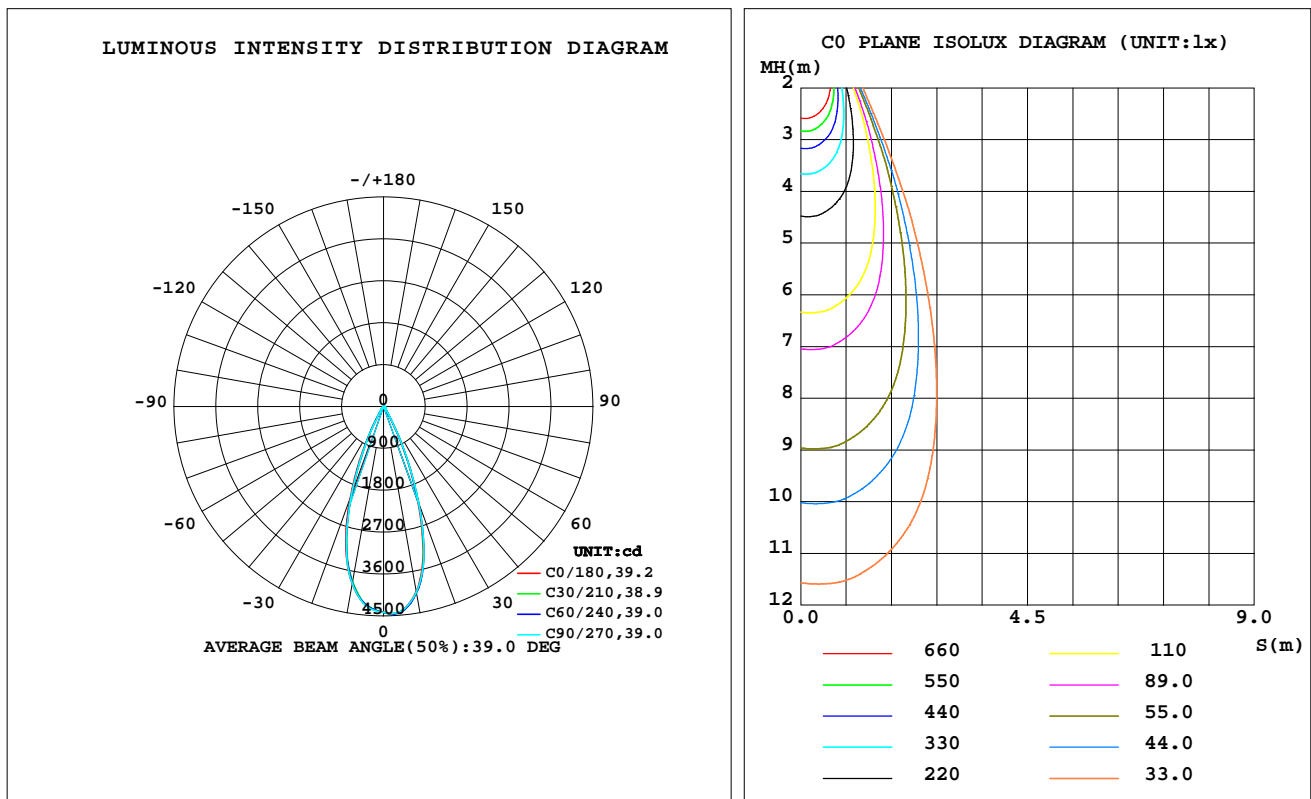
C Range: 0 - 360DEG
C Interval: 30.0DEG
Test Speed: HIGH
Temperature: 25.3 °C
Operators: zoe
Test Date: 2024-4-7

γ Range: 0 - 180DEG
γ Interval: 1.0DEG
Test System: EVERFINE GO-SPEX500_V1 SYSTEM V2.00.461
Humidity: 65.0%
Test Distance: 3.160m [K=1.0000]
Remarks: LAMP: BXRE-40G10TH-A-83 Ra: 90
LENS: PM-0132B 36R
DRIVER: SC42W300-1050CG-4W 400mA
30minutes warm-up

LUMINAIRE PHOTOMETRIC TEST REPORT

Test:U:220.11V I:0.0792A P:15.912W PF:0.9085 Freq:49.99Hz Lamp Flux:2089x1 lm		
NAME: 2319.200-UA-400-HE	TYPE:	WEIGHT:
SPEC.: 4000K	DIM.:	SERIAL No.: 2404070259
MFR.: RISE	SUR.: 0.002826m2	Shielding Angle:

DATA OF LAMP		PHOTOMETRIC DATA Eff: 120.29 lm/W			
MODEL	Brideglux	Imax(cd)	4464	S/MH(C0/180)	0.61
NOMINAL POWER(W)	16	LOR(%)	91.6	S/MH(C90/270)	0.59
RATED VOLTAGE(V)	220	TOTAL FLUX(lm)	1914.1	η UP,DN(C0-180)	0.0,47.1
NOMINAL FLUX(lm)	2089	CIE CLASS	DIRECT	η UP,DN(C180-360)	0.0,44.5
LAMPS INSIDE	1	η up(%)	0.0	CIBSE SHR NOM	0.50
TEST VOLTAGE(V)	220	η down(%)	91.6	CIBSE SHR MAX	0.65



C Range: 0 - 360DEG
C Interval: 30.0DEG
Test Speed: HIGH
Temperature:25.3℃
Operators:zoe
Test Date:2024-4-7

γ Range: 0 - 180DEG
 γ Interval: 1.0DEG
Test System:EVERFINE GO-SPEX500_V1 SYSTEM V2.00.461
Humidity:65.0%
Test Distance:3.160m [K=1.0000]
Remarks: LAMP:BXRE-40G10TH-A-83 Ra:90
LENS:PM-0132B 36R
DRIVER:SC42W300-1050CG-4W 400mA
30minutes warm-up

ZONAL FLUX DIAGRAM

ZONAL FLUX DIAGRAM:

γ	C0	C45	C90	C135	C180	C225	C270	C315	γ	Φ zone	Φ total	%lum,lamp
10	4039	4073	4057	3962	3874	3835	3867	3935	0- 10	402.5	402.5	21,19.3
20	2166	2213	2217	2181	2102	2018	2010	2047	10- 20	864.7	1267	66.2,60.7
30	328.0	334.0	358.0	346.5	335.9	319.1	301.5	296.7	20- 30	489.1	1756	91.8,84.1
40	69.80	73.98	72.87	68.54	64.71	65.97	64.70	65.46	30- 40	84.65	1841	96.2,88.1
50	38.02	39.41	39.13	37.06	36.34	37.08	37.01	36.75	40- 50	38.80	1880	98.2,90
60	15.69	16.65	17.39	16.93	16.08	15.72	15.75	15.43	50- 60	24.82	1905	99.5,91.2
70	2.886	3.328	3.540	3.533	3.184	3.261	3.292	3.134	60- 70	8.644	1913	100,91.6
80	0.0587	0.0405	0.0548	0.0423	0.0509	0.0346	0.0472	0.0298	70- 80	0.9066	1914	100,91.6
90	0	0	0	0	0	0	0	0	80- 90	0.0315	1914	100,91.6
100	0	0	0	0	0	0	0	0	90-100	0	1914	100,91.6
110	0	0	0	0	0	0	0	0	100-110	0	1914	100,91.6
120	0	0	0	0	0	0	0	0	110-120	0	1914	100,91.6
130	0	0	0	0	0	0	0	0	120-130	0	1914	100,91.6
140	0	0	0	0	0	0	0	0	130-140	0	1914	100,91.6
150	0	0	0	0	0	0	0	0	140-150	0	1914	100,91.6
160	0	0	0	0	0	0	0	0	150-160	0	1914	100,91.6
170	0	0	0	0	0	0	0	0	160-170	0	1914	100,91.6
180	0	0	0	0	0	0	0	0	170-180	0	1914	100,91.6
DEG	LUMINOUS INTENSITY:cd									UNIT:lm		

C Range: 0 - 360DEG
C Interval: 30.0DEG
Test Speed: HIGH
Temperature:25.3℃
Operators:zoe
Test Date:2024-4-7

γ Range: 0 - 180DEG
 γ Interval: 1.0DEG
Test System:EVERFINE GO-SPEX500_V1 SYSTEM V2.00.461
Humidity:65.0%
Test Distance:3.160m [K=1.0000]
Remarks: LAMP:BXRE-40G10TH-A-83 Ra:90
LENS:PM-0132B 36R
DRIVER:SC42W300-1050CG-4W 400mA
30minutes warm-up

LUMINANCE LIMITATION CURVES

Test:U:220.11V I:0.0792A P:15.912W PF:0.9085 Freq:49.99Hz
Lamp Flux:2089x1 lm

NAME: 2319.200-UA-400-HE

TYPE:

WEIGHT:

SPEC.: 4000K

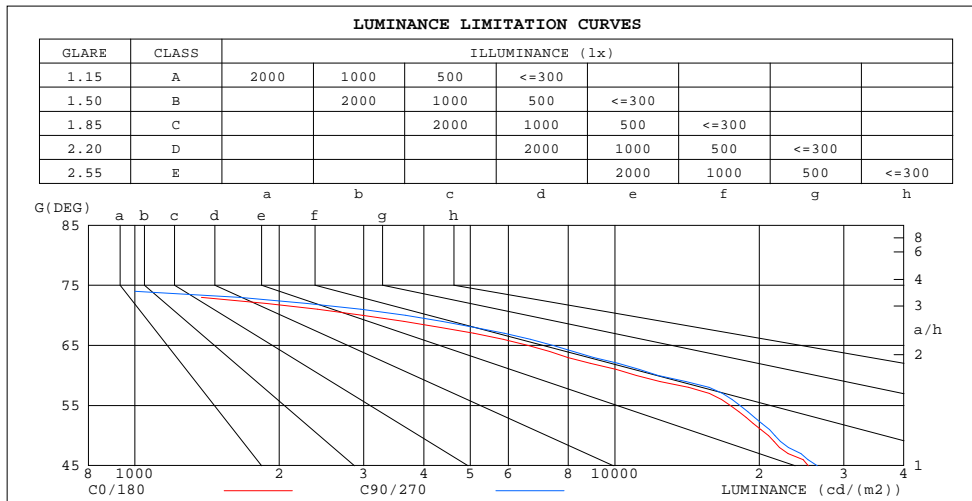
DIM.:

SERIAL No.: 2404070259

MFR.: RISE

SUR.: 0.002826m2

Shielding Angle:



LUMINANCE cd/(m2)		
G(180)	G(270)	
85	172	178
80	120	112
75	288	476
70	2981	3664
65	6595	7433
60	11090	12312
55	17426	18252
50	20898	21549
45	25311	26406

C Range: 0 - 360DEG
C Interval: 30.0DEG
Test Speed: HIGH
Temperature:25.3℃
Operators:zoe
Test Date:2024-4-7

γ Range: 0 - 180DEG
γ Interval: 1.0DEG
Test System:EVERFINE GO-SPEX500_V1 SYSTEM V2.00.461
Humidity:65.0%
Test Distance:3.160m [K=1.0000]
Remarks: LAMP:BXRE-40G10TH-A-83 Ra:90
LENS:PM-0132B 36R
DRIVER:SC42W300-1050CG-4W 400mA
30minutes warm-up

CU AND LUMINAIRE BUDGETARY ESTIMATE DIAGRAM

Test:U:220.11V I:0.0792A P:15.912W PF:0.9085 Freq:49.99Hz
Lamp Flux:2089x1 lm

NAME: 2319.200-UA-400-HE

TYPE:

WEIGHT:

SPEC.: 4000K

DIM.:

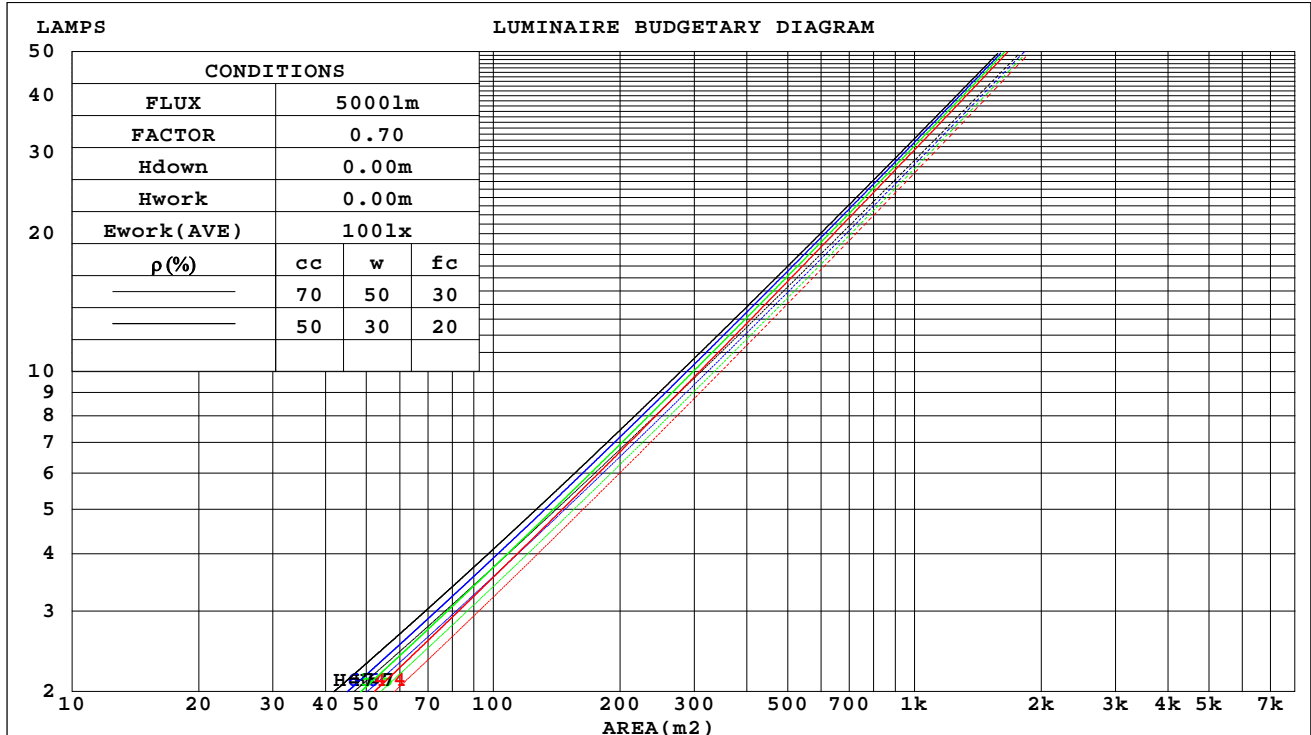
SERIAL No.: 2404070259

MFR.: RISE

SUR.: 0.002826m2

Shielding Angle:

ρ_{cc}	80%			70%			50%			30%			10%			0
ρ_w	50%	30%	10%	50%	30%	10%	50%	30%	10%	50%	30%	10%	50%	30%	10%	0
ρ_{fc}	20%			20%			20%			20%			20%			0
RCR	RCR:Room Cavity Ratio Coefficients of Utilization(CU)															
0.0	1.09	1.09	1.09	1.07	1.07	1.07	1.02	1.02	1.02	.97	.97	.97	.93	.93	.93	.92
1.0	1.03	1.01	.99	1.01	.99	.97	.97	.96	.94	.94	.93	.92	.91	.90	.89	.87
2.0	.97	.94	.91	.95	.93	.90	.93	.90	.88	.90	.88	.86	.87	.86	.85	.83
3.0	.92	.88	.85	.91	.87	.85	.88	.86	.83	.86	.84	.82	.84	.82	.81	.79
4.0	.88	.83	.80	.87	.83	.80	.85	.81	.79	.83	.80	.78	.81	.79	.77	.76
5.0	.83	.79	.76	.83	.79	.76	.81	.78	.75	.80	.77	.74	.78	.76	.74	.73
6.0	.80	.75	.72	.79	.75	.72	.78	.74	.71	.77	.73	.71	.76	.73	.71	.69
7.0	.76	.72	.69	.76	.72	.69	.75	.71	.68	.74	.71	.68	.73	.70	.68	.67
8.0	.73	.69	.66	.73	.69	.66	.72	.68	.66	.71	.68	.65	.70	.67	.65	.64
9.0	.71	.66	.63	.70	.66	.63	.69	.66	.63	.69	.65	.63	.68	.65	.63	.62
10.0	.68	.64	.61	.68	.63	.61	.67	.63	.61	.66	.63	.60	.66	.63	.60	.59



C Range: 0 - 360DEG
C Interval: 30.0DEG
Test Speed: HIGH
Temperature:25.3℃
Operators:zoe
Test Date:2024-4-7

γ Range: 0 - 180DEG
 γ Interval: 1.0DEG
Test System:EVERFINE GO-SPEX500_V1 SYSTEM V2.00.461
Humidity:65.0%
Test Distance:3.160m [K=1.0000]
Remarks: LAMP:BXRE-40G10TH-A-83 Ra:90
LENS:PM-0132B 36R
DRIVER:SC42W300-1050CG-4W 400mA
30minutes warm-up

WEC AND CCEC

Test:U:220.11V I:0.0792A P:15.912W PF:0.9085 Freq:49.99Hz Lamp Flux:2089x1 lm		
NAME: 2319.200-UA-400-HE	TYPE:	WEIGHT:
SPEC.: 4000K	DIM.:	SERIAL No.: 2404070259
MFR.: RISE	SUR.: 0.002826m2	Shielding Angle:

pcc	80%			70%			50%			30%			10%			0
pw	50%	30%	10%	50%	30%	10%	50%	30%	10%	50%	30%	10%	50%	30%	10%	0
pfc	20%			20%			20%			20%			20%			0
RCR	RCR:Room Cavity Ratio						Wall Exitance Coefficients(WEC)									
0.0																
1.0	.140	.080	.025	.134	.076	.024	.122	.070	.022	.112	.065	.021	.102	.059	.019	
2.0	.132	.072	.022	.127	.070	.021	.117	.065	.020	.108	.061	.019	.100	.057	.018	
3.0	.124	.066	.020	.120	.064	.019	.112	.061	.018	.104	.057	.018	.097	.054	.017	
4.0	.117	.061	.018	.113	.059	.018	.107	.057	.017	.100	.054	.016	.094	.051	.016	
5.0	.111	.056	.016	.108	.055	.016	.102	.053	.016	.096	.051	.015	.091	.049	.015	
6.0	.105	.053	.015	.103	.052	.015	.098	.050	.015	.093	.048	.014	.088	.047	.014	
7.0	.100	.050	.014	.098	.049	.014	.094	.047	.014	.089	.046	.013	.086	.044	.013	
8.0	.096	.047	.013	.094	.046	.013	.090	.045	.013	.086	.044	.013	.083	.043	.012	
9.0	.092	.044	.012	.090	.044	.012	.087	.043	.012	.083	.042	.012	.080	.041	.012	
10.0	.088	.042	.012	.087	.042	.012	.084	.041	.012	.081	.040	.011	.078	.039	.011	

pcc	80%			70%			50%			30%			10%			0	
pw	50%	30%	10%	50%	30%	10%	50%	30%	10%	50%	30%	10%	50%	30%	10%	0	
pfc	20%			20%			20%			20%			20%			0	
RCR	RCR:Room Cavity Ratio						Ceiling Cavity Exitance Coefficients(CCEC)										
0.0	.175	.175	.175	.149	.149	.149	.102	.102	.102	.058	.058	.058	.019	.019	.019		
1.0	.155	.144	.134	.133	.124	.116	.091	.085	.080	.052	.049	.047	.017	.016	.015		
2.0	.140	.122	.106	.120	.105	.092	.082	.072	.064	.047	.042	.038	.015	.014	.012		
3.0	.127	.104	.086	.109	.090	.074	.075	.062	.052	.043	.036	.031	.014	.012	.010		
4.0	.116	.090	.070	.100	.078	.061	.069	.054	.043	.040	.032	.025	.013	.010	.008		
5.0	.107	.079	.058	.092	.068	.051	.063	.048	.036	.037	.028	.021	.012	.009	.007		
6.0	.100	.070	.049	.086	.061	.043	.059	.043	.030	.034	.025	.018	.011	.008	.006		
7.0	.093	.063	.042	.080	.054	.036	.055	.038	.026	.032	.023	.015	.010	.007	.005		
8.0	.088	.057	.036	.075	.049	.031	.052	.035	.022	.030	.020	.013	.010	.007	.004		
9.0	.083	.052	.031	.071	.045	.027	.049	.032	.019	.029	.019	.011	.009	.006	.004		
10.0	.078	.048	.027	.068	.041	.024	.047	.029	.017	.027	.017	.010	.009	.006	.003		

C Range: 0 - 360DEG
C Interval: 30.0DEG
Test Speed: HIGH
Temperature:25.3℃
Operators:zoe
Test Date:2024-4-7

γ Range: 0 - 180DEG
γ Interval: 1.0DEG
Test System:EVERFINE GO-SPEX500_V1 SYSTEM V2.00.461
Humidity:65.0%
Test Distance:3.160m [K=1.0000]
Remarks: LAMP:BXRE-40G10TH-A-83 Ra:90
LENS:PM-0132B 36R
DRIVER:SC42W300-1050CG-4W 400mA
30minutes warm-up

UGR(Unified Glare Rating) Table

Test:U:220.11V I:0.0792A P:15.912W PF:0.9085 Freq:49.99Hz Lamp Flux:2089x1 lm										
NAME: 2319.200-UA-400-HE					TYPE:			WEIGHT:		
SPEC.: 4000K					DIM.:			SERIAL No.: 2404070259		
MFR.: RISE					SUR.: 0.002826m2			Shielding Angle:		
ceiling/cavity	0.7	0.7	0.5	0.5	0.3	0.7	0.7	0.5	0.5	0.3
walls	0.5	0.3	0.5	0.3	0.3	0.5	0.3	0.5	0.3	0.3
working plane	0.2	0.2	0.2	0.2	0.2	0.2	0.2	0.2	0.2	0.2
Room dimensions	Viewed crosswise					Viewed endwise				
x = 2H y = 2H	12.6	13.4	12.8	13.5	13.7	12.9	13.7	13.1	13.8	14.0
3H	12.6	13.3	12.8	13.5	13.7	12.9	13.6	13.1	13.8	14.0
4H	12.5	13.2	12.8	13.4	13.6	12.8	13.5	13.1	13.7	13.9
6H	12.4	13.0	12.7	13.3	13.5	12.7	13.4	13.0	13.6	13.8
8H	12.4	13.0	12.7	13.2	13.5	12.7	13.3	13.0	13.5	13.8
12H	12.3	12.9	12.6	13.2	13.4	12.6	13.2	13.0	13.5	13.8
4H 2H	12.6	13.3	12.9	13.5	13.7	12.9	13.6	13.2	13.8	14.0
3H	12.6	13.2	12.9	13.5	13.7	12.9	13.5	13.2	13.8	14.0
4H	12.5	13.1	12.9	13.4	13.7	12.8	13.4	13.2	13.6	13.9
6H	12.4	12.9	12.8	13.2	13.6	12.7	13.2	13.1	13.5	13.9
8H	12.4	12.8	12.8	13.2	13.5	12.7	13.1	13.1	13.5	13.8
12H	12.3	12.7	12.7	13.1	13.5	12.6	13.0	13.0	13.4	13.8
8H 4H	12.4	12.8	12.8	13.2	13.5	12.7	13.1	13.1	13.5	13.8
6H	12.3	12.6	12.7	13.0	13.4	12.6	12.9	13.0	13.3	13.7
8H	12.2	12.5	12.7	12.9	13.4	12.5	12.8	13.0	13.2	13.7
12H	12.2	12.4	12.6	12.9	13.3	12.4	12.7	12.9	13.2	13.6
12H 4H	12.3	12.7	12.7	13.1	13.5	12.6	13.0	13.0	13.4	13.8
6H	12.2	12.5	12.7	12.9	13.4	12.5	12.8	13.0	13.2	13.7
8H	12.2	12.4	12.6	12.9	13.3	12.4	12.7	12.9	13.2	13.6
Variations with the observer position at spacings(CIE Pub.117):										
S = 1.0H	+ 1.2 / - 1.8					+ 1.2 / - 1.8				
1.5H	+ 1.4 / - 0.9					+ 1.5 / - 0.9				
2.0H	+ 2.1 / - 3.8					+ 2.0 / - 3.8				

CIE Pub.117, 2089 lm Total Lamp Luminous Flux Correct (8log(F/F0) = 2.6)
Area: 0.002826 m2

C Range: 0 - 360DEG
C Interval: 30.0DEG
Test Speed: HIGH
Temperature:25.3℃
Operators:zoe
Test Date:2024-4-7

γ Range: 0 - 180DEG
γ Interval: 1.0DEG
Test System:EVERFINE GO-SPEX500_V1 SYSTEM V2.00.461
Humidity:65.0%
Test Distance:3.160m [K=1.0000]
Remarks: LAMP:BXRE-40G10TH-A-83 Ra:90
LENS:PM-0132B 36R
DRIVER:SC42W300-1050CG-4W 400mA
30minutes warm-up

UTILIZATION FACTORS TABLE

Test:U:220.11V I:0.0792A P:15.912W PF:0.9085 Freq:49.99Hz Lamp Flux:2089x1 lm		
NAME: 2319.200-UA-400-HE	TYPE:	WEIGHT:
SPEC.: 4000K	DIM.:	SERIAL No.: 2404070259
MFR.: RISE	SUR.: 0.002826m2	Shielding Angle:

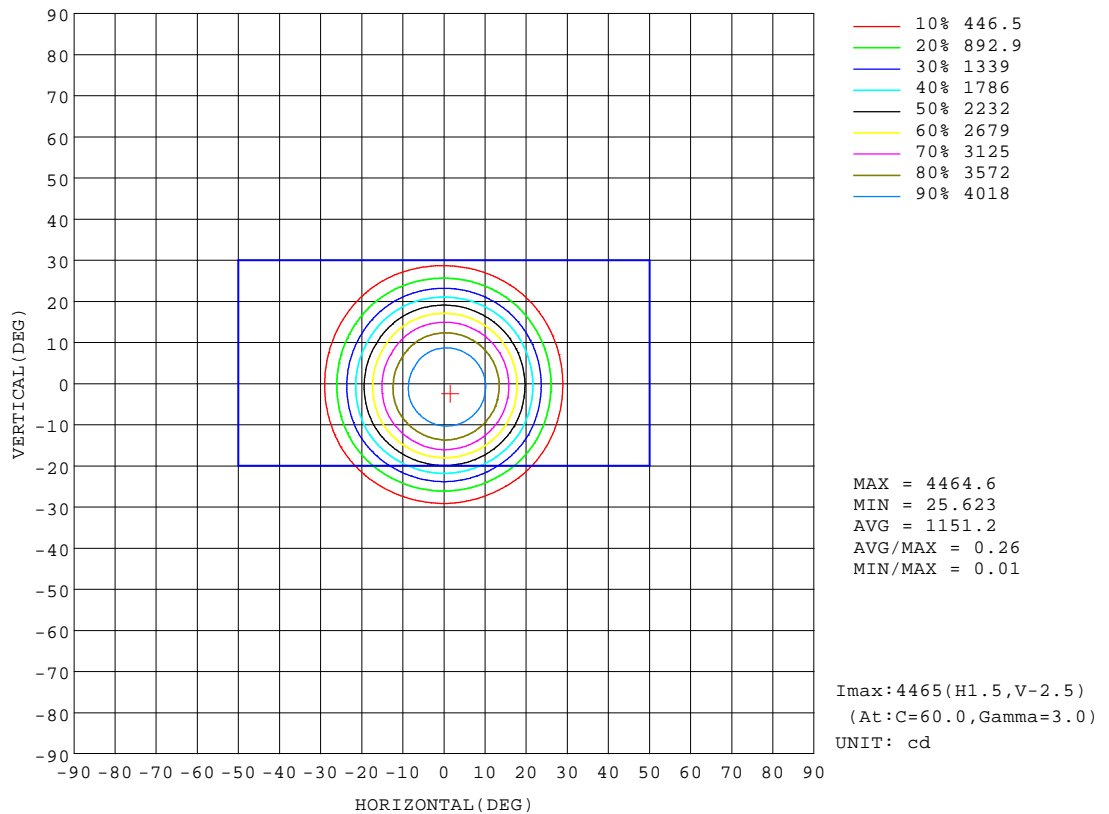
REFLECTANCE										
Ceiling	0.8	0.8	0.8	0.7	0.7	0.7	0.5	0.5	0.5	0
Walls	0.7	0.5	0.3	0.7	0.5	0.3	0.7	0.5	0.3	0
Working plane	0.2	0.2	0.2	0.2	0.2	0.2	0.2	0.2	0.2	0
ROOM INDEX	UTILIZATION FACTORS(PERCENT) $k(RI) \times RCR = 5$									
k = 0.60	82	76	73	81	76	73	81	76	73	70
0.80	88	83	80	88	83	80	87	82	79	76
1.00	92	87	84	91	87	84	90	87	83	80
1.25	95	91	88	95	90	88	93	89	87	83
1.50	98	94	91	97	93	90	95	92	89	85
2.00	100	96	94	99	95	93	96	94	92	87
2.50	102	98	96	100	97	95	97	95	93	88
3.00	103	100	98	101	99	97	98	96	95	89
4.00	105	102	100	103	101	99	99	98	97	90
5.00	106	104	102	104	102	101	100	99	98	91
ROOM INDEX	UF(total)									Direct
According to DIN EN 13032-2 2004			Suspended					SHRNOM = 1.25		

C Range: 0 - 360DEG
C Interval: 30.0DEG
Test Speed: HIGH
Temperature:25.3℃
Operators:zoe
Test Date:2024-4-7

γ Range: 0 - 180DEG
γ Interval: 1.0DEG
Test System:EVERFINE GO-SPEX500_V1 SYSTEM V2.00.461
Humidity:65.0%
Test Distance:3.160m [K=1.0000]
Remarks: LAMP:BXRE-40G10TH-A-83 Ra:90
LENS:PM-0132B 36R
DRIVER:SC42W300-1050CG-4W 400mA
30minutes warm-up

ISOCANDELA DIAGRAM

Test:U:220.11V I:0.0792A P:15.912W PF:0.9085 Freq:49.99Hz Lamp Flux:2089x1 lm		
NAME: 2319.200-UA-400-HE	TYPE:	WEIGHT:
SPEC.: 4000K	DIM.:	SERIAL No.: 2404070259
MFR.: RISE	SUR.: 0.002826m2	Shielding Angle:

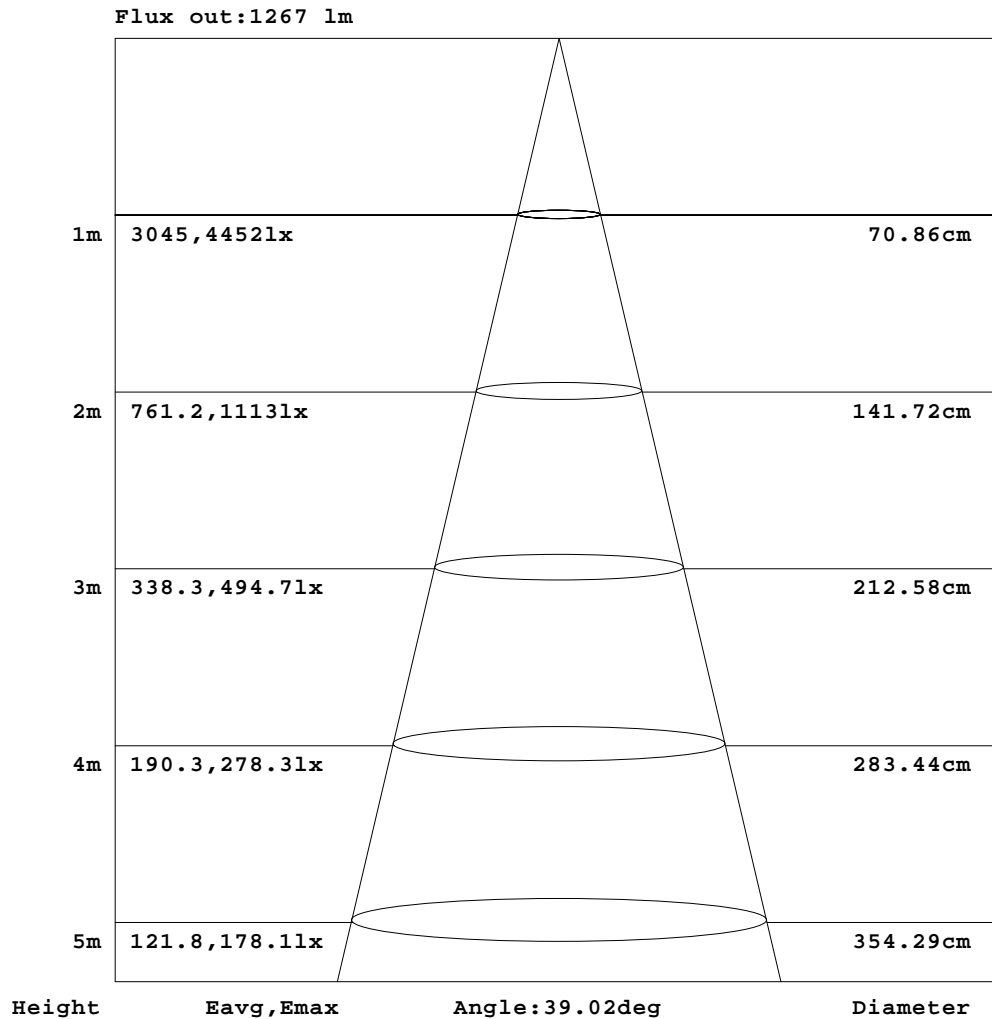


C Range: 0 - 360DEG
C Interval: 30.0DEG
Test Speed: HIGH
Temperature:25.3℃
Operators:zoe
Test Date:2024-4-7

γ Range: 0 - 180DEG
γ Interval: 1.0DEG
Test System:EVERFINE GO-SPEX500_V1 SYSTEM V2.00.461
Humidity:65.0%
Test Distance:3.160m [K=1.0000]
Remarks: LAMP:BXRE-40G10TH-A-83 Ra:90
LENS:PM-0132B 36R
DRIVER:SC42W300-1050CG-4W 400mA
30minutes warm-up

AAI Figure

Test:U:220.11V I:0.0792A P:15.912W PF:0.9085 Freq:49.99Hz Lamp Flux:2089x1 lm		
NAME: 2319.200-UA-400-HE	TYPE:	WEIGHT:
SPEC.: 4000K	DIM.:	SERIAL No.: 2404070259
MFR.: RISE	SUR.: 0.002826m2	Shielding Angle:



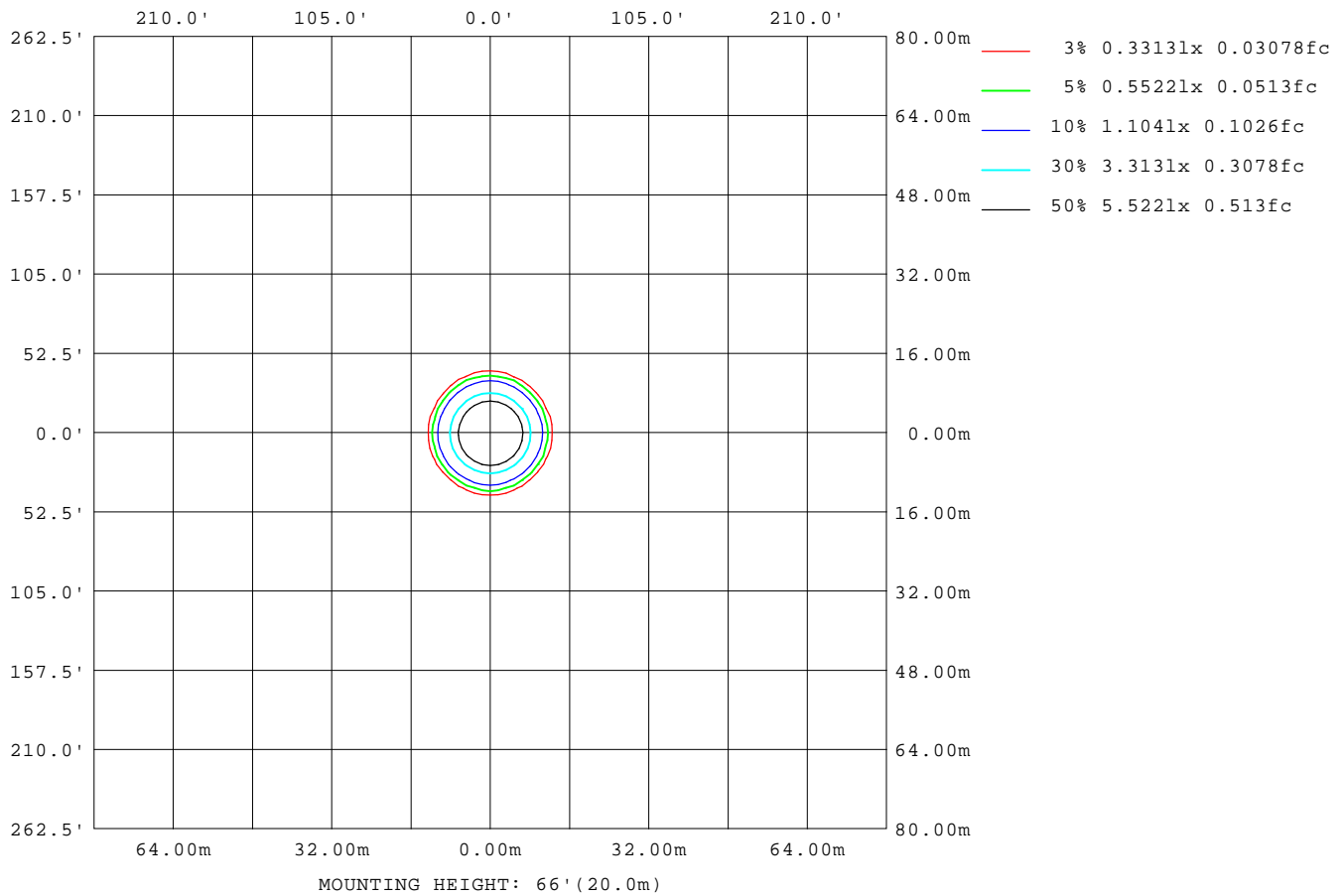
Note:The Curves indicate the illuminated area and the average illumination when the luminaire is at different distance.

C Range: 0 - 360DEG
C Interval: 30.0DEG
Test Speed: HIGH
Temperature:25.3℃
Operators:zoe
Test Date:2024-4-7

γ Range: 0 - 180DEG
γ Interval: 1.0DEG
Test System:EVERFINE GO-SPEX500_V1 SYSTEM V2.00.461
Humidity:65.0%
Test Distance:3.160m [K=1.0000]
Remarks: LAMP:BXRE-40G10TH-A-83 Ra:90
LENS:PM-0132B 36R
DRIVER:SC42W300-1050CG-4W 400mA
30minutes warm-up

ISOLUX DIAGRAM

Test:U:220.11V I:0.0792A P:15.912W PF:0.9085 Freq:49.99Hz Lamp Flux:2089x1 lm		
NAME: 2319.200-UA-400-HE	TYPE:	WEIGHT:
SPEC.: 4000K	DIM.:	SERIAL No.: 2404070259
MFR.: RISE	SUR.: 0.002826m2	Shielding Angle:



C Range: 0 - 360DEG
C Interval: 30.0DEG
Test Speed: HIGH
Temperature:25.3℃
Operators:zoe
Test Date:2024-4-7

γ Range: 0 - 180DEG
γ Interval: 1.0DEG
Test System:EVERFINE GO-SPEX500_V1 SYSTEM V2.00.461
Humidity:65.0%
Test Distance:3.160m [K=1.0000]
Remarks: LAMP:BXRE-40G10TH-A-83 Ra:90
LENS:PM-0132B 36R
DRIVER:SC42W300-1050CG-4W 400mA
30minutes warm-up

LED Avg.L Report

Test:U:220.11V I:0.0792A P:15.912W PF:0.9085 Freq:49.99Hz Lamp Flux:2089x1 lm		
NAME: 2319.200-UA-400-HE	TYPE:	WEIGHT:
SPEC.: 4000K	DIM.:	SERIAL No.: 2404070259
MFR.: RISE	SUR.: 0.002826m2	Shielding Angle:

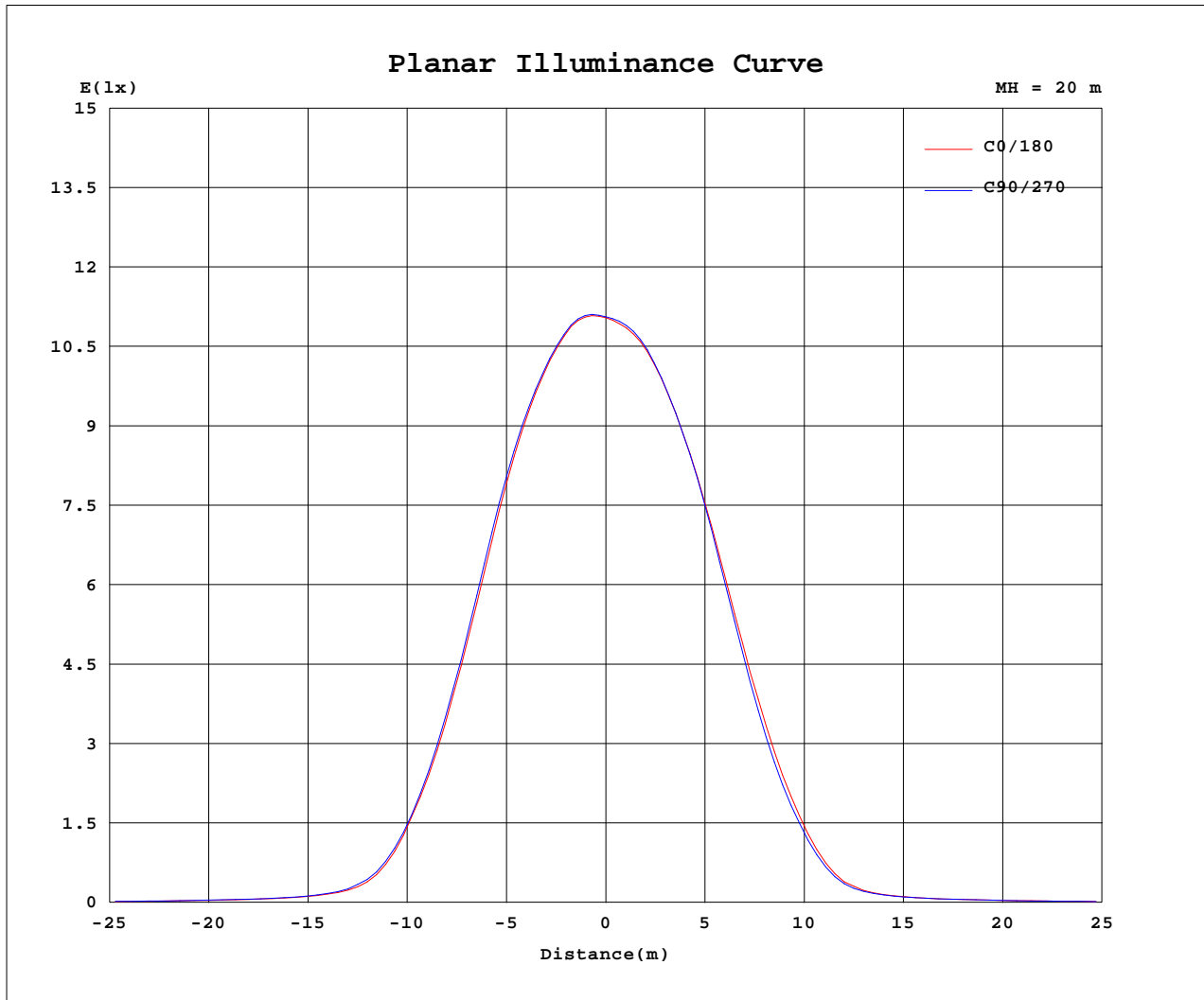
AvgL	cd/m2
L_0~180(65)av	6814
L_0~180(75)av	350
L_0~180(85)av	173
L_90~270(65)av	7191
L_90~270(75)av	397
L_90~270(85)av	166
L_45(65)av	7018
L_45(75)av	355
L_45(85)av	81

Standard: GB/T 29293-2012

C Range: 0 - 360DEG
C Interval: 30.0DEG
Test Speed: HIGH
Temperature:25.3℃
Operators:zoe
Test Date:2024-4-7

γ Range: 0 - 180DEG
γ Interval: 1.0DEG
Test System:EVERFINE GO-SPEX500_V1 SYSTEM V2.00.461
Humidity:65.0%
Test Distance:3.160m [K=1.0000]
Remarks: LAMP:BXRE-40G10TH-A-83 Ra:90
LENS:PM-0132B 36R
DRIVER:SC42W300-1050CG-4W 400mA
30minutes warm-up

Planar Illuminance Curve



C Range: 0 - 360DEG
 C Interval: 30.0DEG
 Test Speed: HIGH
 Temperature: 25.3 °C
 Operators: zoe
 Test Date: 2024-4-7

γ Range: 0 - 180DEG
 γ Interval: 1.0DEG
 Test System: EVERFINE GO-SPEX500_V1 SYSTEM V2.00.461
 Humidity: 65.0%
 Test Distance: 3.160m [K=1.0000]
 Remarks: LAMP: BXRE-40G10TH-A-83 Ra:90
 LENS: PM-0132B 36R
 DRIVER: SC42W300-1050CG-4W 400mA
 30minutes warm-up



LUMINOUS DISTRIBUTION INTENSITY DATA

Test:U:220.11V I:0.0792A P:15.912W PF:0.9085 Freq:49.99Hz Lamp Flux:2089x1 lm		
NAME: 2319.200-UA-400-HE	TYPE:	WEIGHT:
SPEC.: 4000K	DIM.:	SERIAL No.: 2404070259
MFR.: RISE	SUR.: 0.002826m2	Shielding Angle:

Table--1

UNIT: cd

C(DEG) γ (DEG)	0	30	60	90	120	150	180	210	240	270	300	330						
0	4424	4424	4424	4424	4424	4424	4424	4424	4424	4424	4424	4424						
5	4407	4433	4429	4412	4370	4331	4292	4273	4281	4302	4334	4366						
10	4039	4071	4074	4057	3991	3932	3874	3825	3845	3867	3903	3966						
15	3292	3341	3349	3351	3280	3222	3141	3073	3094	3103	3133	3204						
20	2166	2212	2214	2217	2185	2176	2102	2018	2019	2010	2018	2075						
25	1077	1115	1086	1111	1096	1126	1081	1014	1001	988	991	1012						
30	328	335	333	358	341	352	336	317	321	301	290	303						
35	117	120	123	125	117	116	111	110	109	107	104	108						
40	69.8	72.5	75.5	72.9	69.8	67.3	64.7	65.9	66.0	64.7	64.6	66.3						
45	50.7	51.9	53.1	52.7	49.0	48.7	47.7	48.5	49.6	48.7	47.7	49.2						
50	38.0	39.2	39.6	39.1	37.5	36.7	36.3	36.9	37.3	37.0	36.6	36.9						
55	28.3	29.3	29.7	29.6	28.5	27.9	27.7	27.9	28.3	28.1	27.8	27.7						
60	15.7	16.3	17.0	17.4	17.2	16.7	16.1	15.6	15.9	15.8	15.6	15.2						
65	7.89	8.21	8.61	8.87	8.97	8.70	8.39	8.20	8.34	8.30	8.23	7.79						
70	2.89	3.28	3.38	3.54	3.62	3.45	3.18	3.26	3.26	3.29	3.31	2.96						
75	0.21	0.24	0.25	0.35	0.34	0.41	0.30	0.24	0.24	0.23	0.18	0.19						
80	0.06	0.04	0.04	0.05	0.04	0.04	0.05	0.04	0.03	0.05	0.03	0.03						
85	0.04	0.02	0.02	0.04	0.03	0.03	0.04	0.02	0.02	0.04	0.02	0.02						
90	0.00	0.00	0.00	0.00	0.00	0.00	0.00	0.00	0.00	0.00	0.00	0.00						
95	0.00	0.00	0.00	0.00	0.00	0.00	0.00	0.00	0.00	0.00	0.00	0.00						
100	0.00	0.00	0.00	0.00	0.00	0.00	0.00	0.00	0.00	0.00	0.00	0.00						
105	0.00	0.00	0.00	0.00	0.00	0.00	0.00	0.00	0.00	0.00	0.00	0.00						
110	0.00	0.00	0.00	0.00	0.00	0.00	0.00	0.00	0.00	0.00	0.00	0.00						
115	0.00	0.00	0.00	0.00	0.00	0.00	0.00	0.00	0.00	0.00	0.00	0.00						
120	0.00	0.00	0.00	0.00	0.00	0.00	0.00	0.00	0.00	0.00	0.00	0.00						
125	0.00	0.00	0.00	0.00	0.00	0.00	0.00	0.00	0.00	0.00	0.00	0.00						
130	0.00	0.00	0.00	0.00	0.00	0.00	0.00	0.00	0.00	0.00	0.00	0.00						
135	0.00	0.00	0.00	0.00	0.00	0.00	0.00	0.00	0.00	0.00	0.00	0.00						
140	0.00	0.00	0.00	0.00	0.00	0.00	0.00	0.00	0.00	0.00	0.00	0.00						
145	0.00	0.00	0.00	0.00	0.00	0.00	0.00	0.00	0.00	0.00	0.00	0.00						
150	0.00	0.00	0.00	0.00	0.00	0.00	0.00	0.00	0.00	0.00	0.00	0.00						
155	0.00	0.00	0.00	0.00	0.00	0.00	0.00	0.00	0.00	0.00	0.00	0.00						
160	0.00	0.00	0.00	0.00	0.00	0.00	0.00	0.00	0.00	0.00	0.00	0.00						
165	0.00	0.00	0.00	0.00	0.00	0.00	0.00	0.00	0.00	0.00	0.00	0.00						
170	0.00	0.00	0.00	0.00	0.00	0.00	0.00	0.00	0.00	0.00	0.00	0.00						
175	0.00	0.00	0.00	0.00	0.00	0.00	0.00	0.00	0.00	0.00	0.00	0.00						
180	0.00	0.00	0.00	0.00	0.00	0.00	0.00	0.00	0.00	0.00	0.00	0.00						

C Range: 0 - 360DEG
C Interval: 30.0DEG
Test Speed: HIGH
Temperature:25.3℃
Operators:zoe
Test Date:2024-4-7

γ Range: 0 - 180DEG
γ Interval: 1.0DEG
Test System:EVERFINE GO-SPEX500_V1 SYSTEM V2.00.461
Humidity:65.0%
Test Distance:3.160m [K=1.0000]
Remarks: LAMP:BXRE-40G10TH-A-83 Ra:90
LENS:PM-0132B 36R
DRIVER:SC42W300-1050CG-4W 400mA
30minutes warm-up